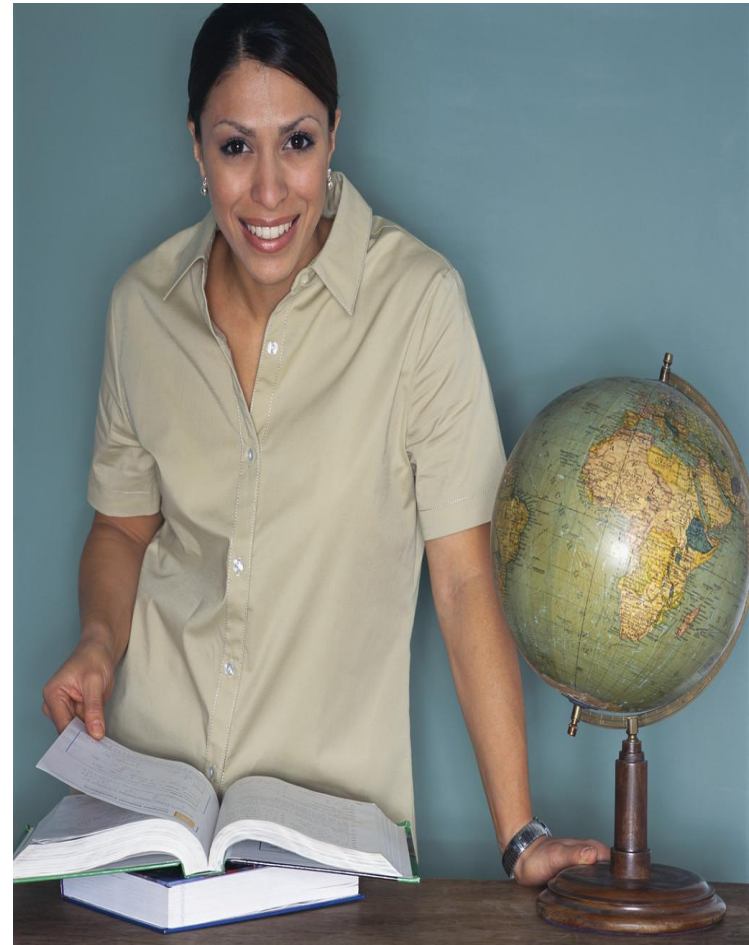


CHANGE THE OUTCOMES



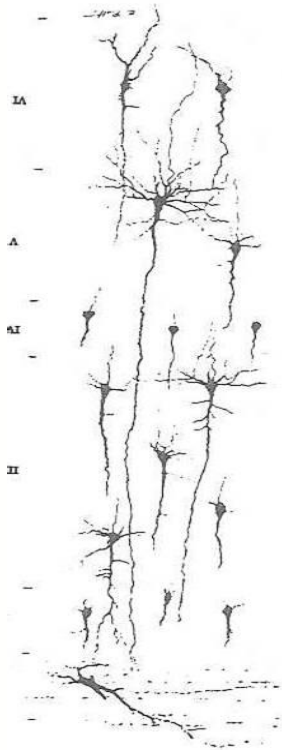
EARLY CHILDHOOD INVESTMENT CORPORATION (ECIC)

Neuron Development-Desarrollo de Nuerona

These are images of the synapses or "connectors" in a child's brain at various ages.

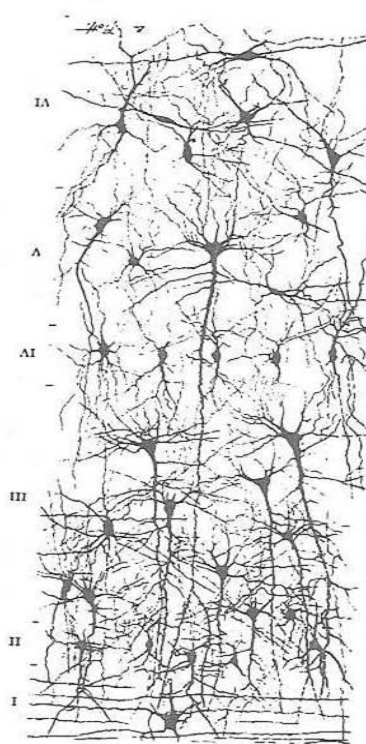
Newborn Baby

Recién Nacido



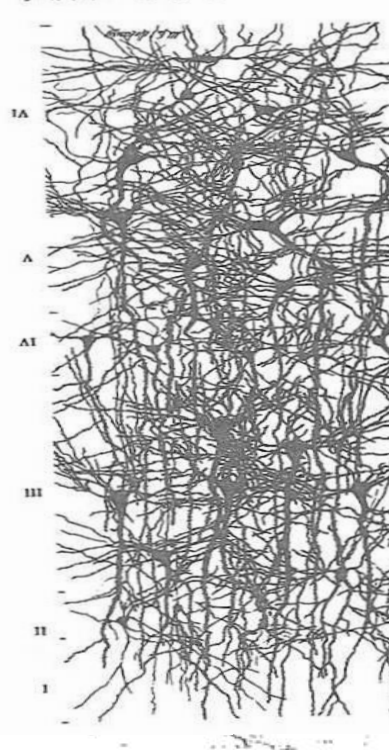
3 Month Old Baby

3 Meses de Edad



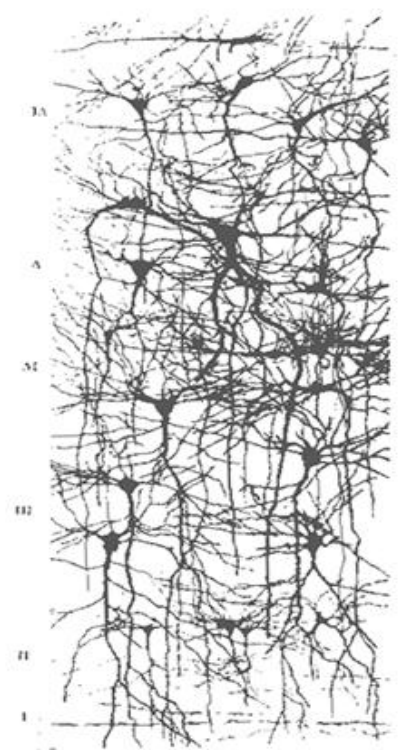
24-Month Old Baby

24 Meses de Edad



6 Year Old

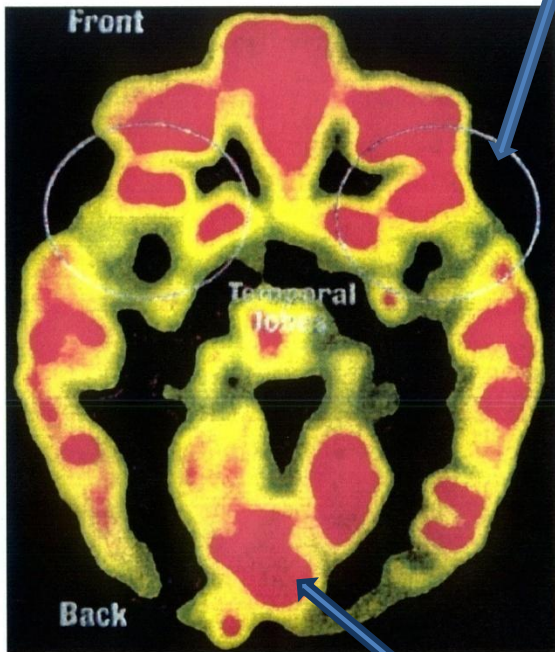
6 Años de Edad



Source: Magic Trees of the Mind. 1999

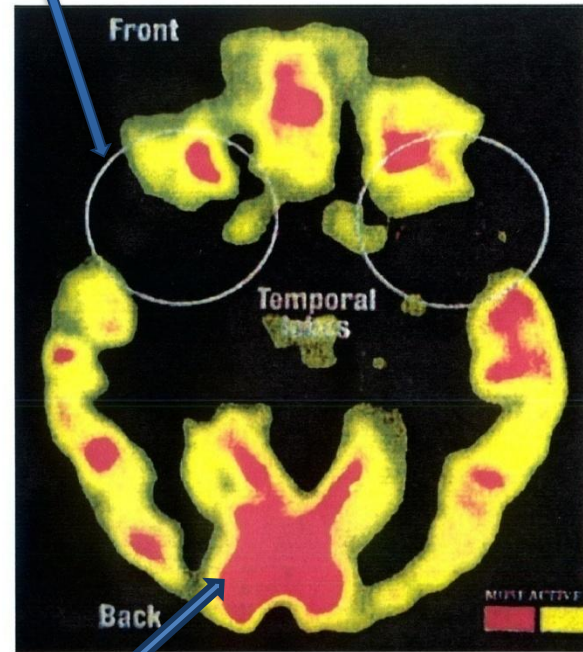
Temporal lobes – Lóbulos Temporales

Healthy Child



Niño Sano

Neglected Child



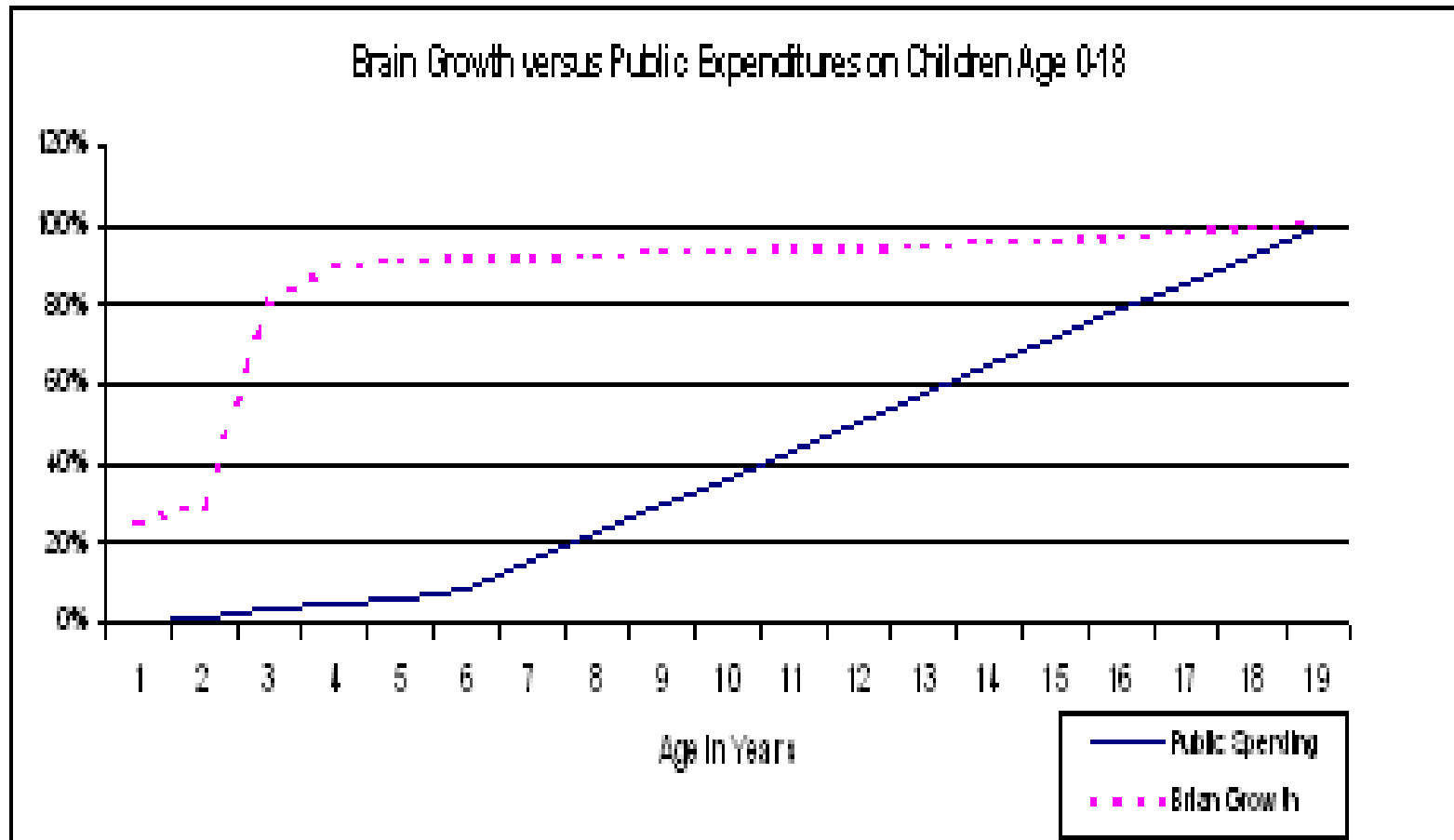
Niño Descuidado

Brain stem - Tronco Encefálico

Rojo y
amarillo
indica
actividad

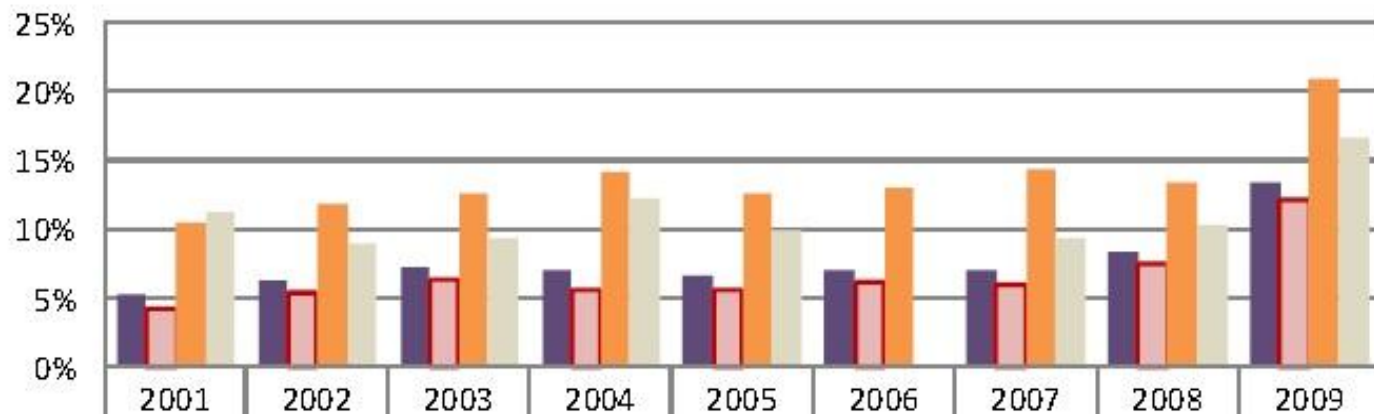
Rojo =
más
actividad

WHERE DO WE INVEST OUR \$\$\$ TODAY?



UNEMPLOYMENT

People of color face higher rates of unemployment

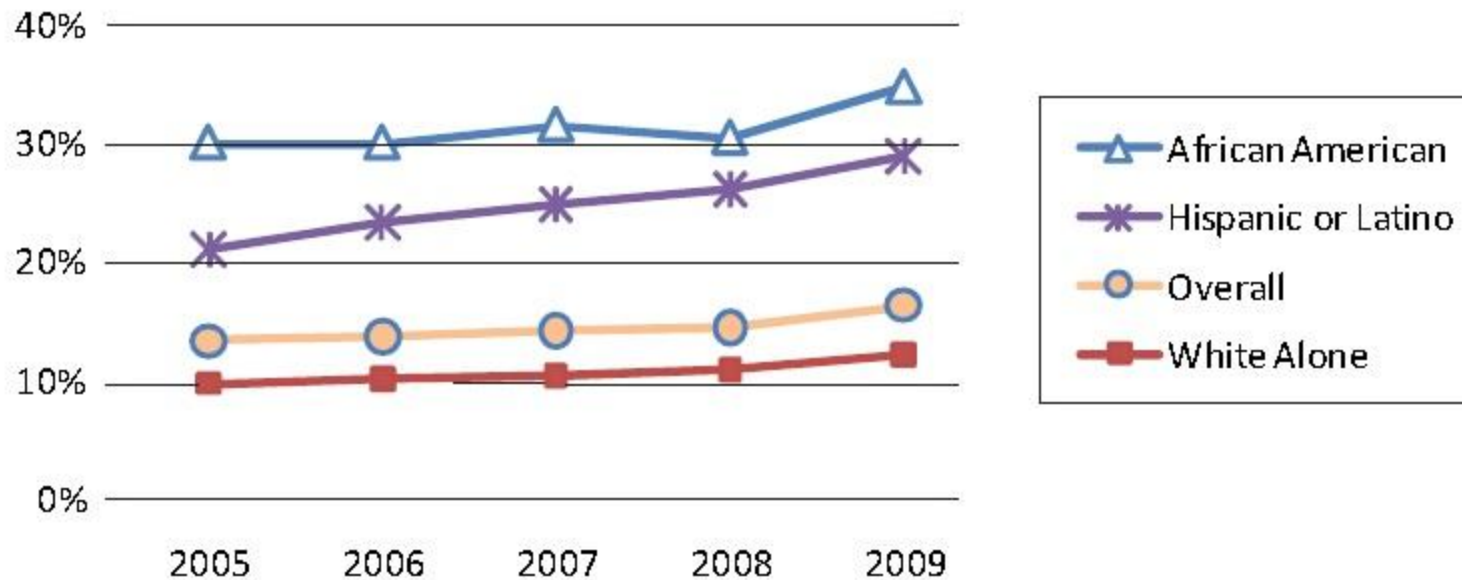


	2001	2002	2003	2004	2005	2006	2007	2008	2009
All	5.3%	6.2%	7.3%	7.0%	6.6%	7.0%	7.1%	8.3%	13.3%
White	4.3%	5.4%	6.4%	5.6%	5.5%	6.2%	6.0%	7.4%	12.2%
African American	10.4%	11.9%	12.6%	14.1%	12.7%	12.9%	14.4%	13.4%	21.0%
Hispanic or Latino	11.2%	8.9%	9.4%	12.3%	10.0%	N/A	9.4%	10.3%	16.6%

Source: Economic Policy Institute analysis of Current Population Survey Data
 Chart created by the Michigan League for Human Services.

POVERTY RATES

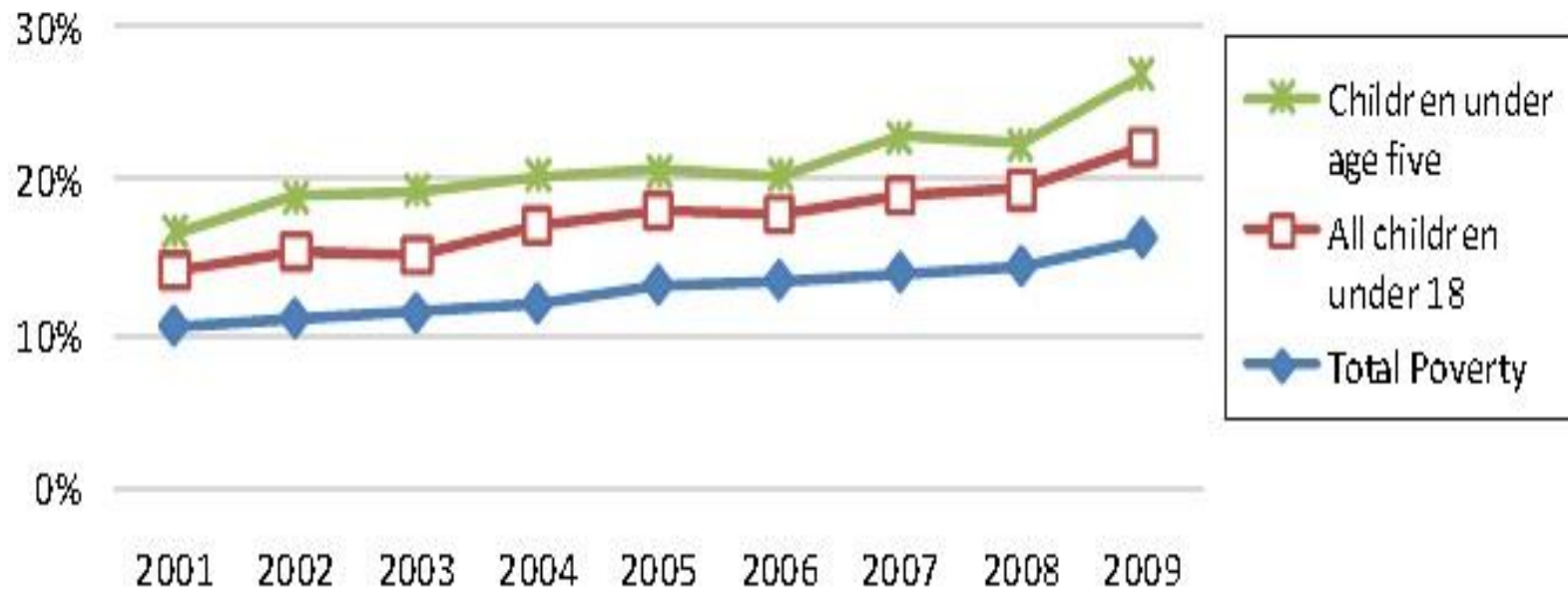
People of color have higher poverty rates



Source: American Community Survey, 1-Year Estimates
Chart created by the Michigan League for Human Services.

CHILDREN & POVERTY

Poverty continues to rise



Source: American Community Survey, 1-Year Estimates
Chart created by the Michigan League for Human Services.

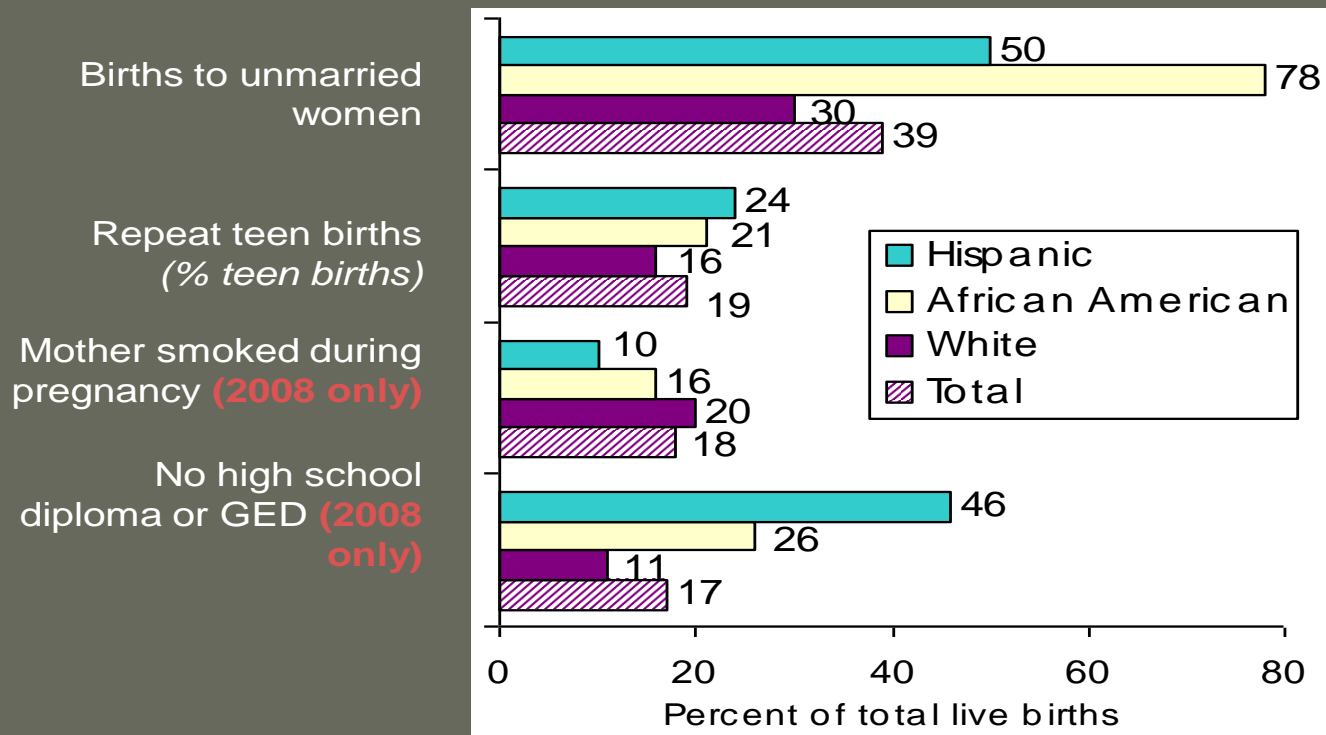
IMPACT OF POVERTY

A Four Year Old Child on Average

- ★ Low income – hears 13 million spoken words
- ★ Working class – hears 26 million spoken words
- ★ Professional working class – hears 45 million words

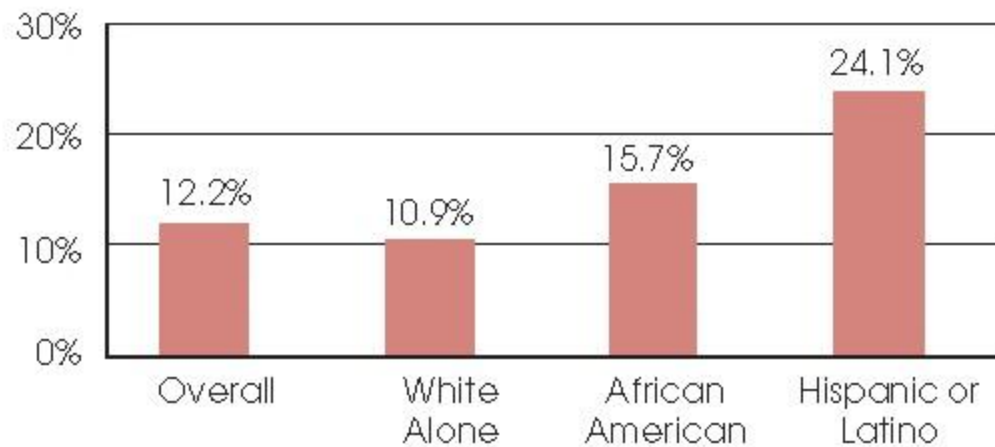
BIRTHS

Large differences occurred among MI racial/ethnic groups on key indicators.



UNINSURED

African Americans and Hispanic/Latinos
are more likely to be uninsured



Source: American Community Survey, 1-Year Estimates
Chart created by the Michigan League for Human Services.

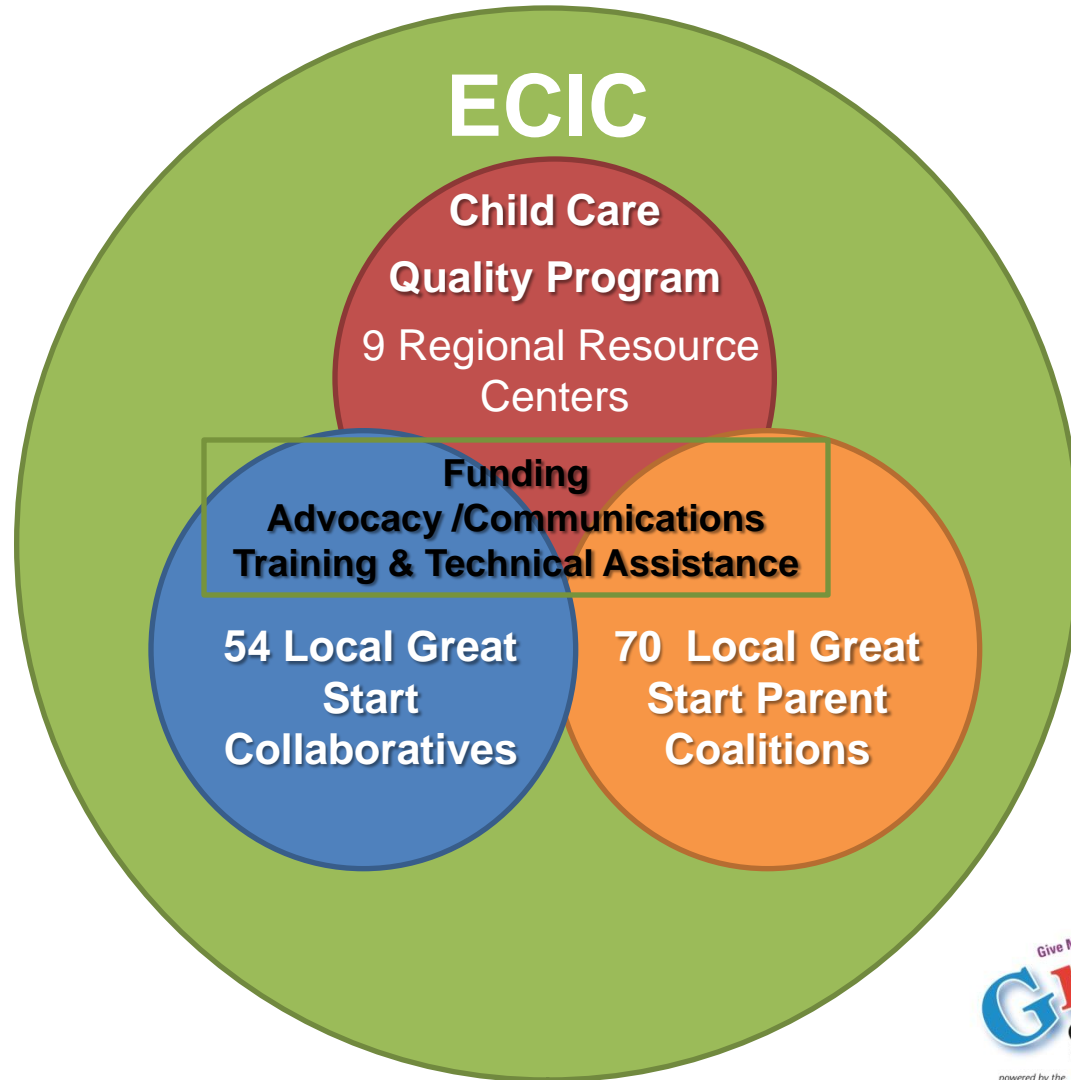
CHILD CARE

- ★ 362,499 infants/toddlers in MI.
- ★ 50% MI infants & toddlers live in low income families
- ★ 67% of MI mothers with infants are in the labor force

GREAT START SYSTEM



MICHIGAN SYSTEMS BUILDING



EARLY CHILDHOOD INVESTMENT CORPORATION

Michigan's Great Start

<http://greatstartforkids.org/>

Star Power

<http://greatstartforkids.org/star-power/>

Michigan's Sandbox Party

<http://www.michigansandboxparty.org/>

CONTACT INFORMATION

Marissa Zamudio

Diversity Specialist

**Early Childhood Investment Corporation
(ECIC)**

112 E. Allegan St. - Lansing, MI 48933

PH. 517-371-9000 x. 240 | F. 517-371-9080

MOBILE 989-400-6554

mzamudio@ecic4kids.org